

**nuova**  
**SIMONELLI**



**APPRIA**  
*Life.*



*Coffee machines for life.*

ENG

 **nuova**  
**SIMONELLI**



# APPIA *Life.*

APPIA LIFE XT  
3 GROUPS



APPIA LIFE XT  
2 GROUPS

XT SERIES

## TIMER SERIES

APPIA LIFE TIMER  
2 GROUPS



# The family expands

APPIA LIFE  
3 GROUPS



APPIA LIFE  
1 GROUPS



APPIA LIFE COMPACT  
2 GROUPS



APPIA LIFE TIMER  
3 GROUPS



**STANDARD**SERIES

# APPIA LIFE A GUARANTEE FOR SUCCESS

Appia Life is created based on the success of the Appia.

With its high productivity and high performance, this machine is appreciated by thousands of baristas worldwide.

The continuous studying and researching of the Nuova Simonelli team regarding the Appia Life, made possible the creation of a superb machine; even more comfortable for the barista with even simpler maintenance compared to the previous Appia.

Appia Life has been studied for those who want a simple and trustworthy machine. It is the perfect coffee maker for large companies, coffee shop chains or wherever there is a need to prepare an abundance of great coffee.

**Simple and innovative.** Appia life stands out, not only for its proven reliability but also for the modern style that makes it unique.

On top of this, now Appia Life was designed to save energy, sustain the environment, and be cost-effective.

Appia Life is now also available with a display in the XT and TIMER versions.

*High productivity  
and more  
sustainable*



Watch the video



*simple and... innovative*



**ENERGY  
SAVING  
& COST-  
EFFECTIVE**





#### INSULATION

The boiler of the Appia Life has DRYTEX THERMICAL technology insulation that

**reduces 13%\***

of energy consumption compared to the Appia II, and it comes as standard series in the whole range of the machine.



#### CONSUMPTION

Appia Life guarantees a

**20% reduction**

in energy consumption and environmental impact. The Life Cycle Assessment\*\* analysis confirms that the Appia Life with its new thermal system, new materials, and general optimization of the mechanical components, has **20%** less environmental impact compared to the Appia II.

# Life.

\* value calculated on Appia Life vs Appia II benchmark

\*\* Life Cycle Assessment is a structured and standardized method used worldwide that quantifies the potential impacts on the environment and human health associated with the use of a product, starting with respecting resources and emissions.

Life.





# APPIA LIFE: PRODUCTIVITY AND CONSISTENCY



## HIGH PRODUCTIVITY

Appia Life is able to prepare up to **250** cappuccinos\* on daily basis.



## MACHINE CONSISTENCY. BECAUSE EVERY CUP COUNTS.

The machine consistency is based on the following technology:

- **SIS – SOFT INFUSION SYSTEM**

SIS guarantees a soft infusion allowing a consistent result, it compensates for any incorrect coffee tamping and it avoids the channelling effect.

- **EASYCREAM**

It allows the quick and automatic making of a dense and velvety milk cream. The nozzles thermal insulation allows this component to be safe, reliable and hygienic.

\*Data: Appia Life 2groups volumetric

# APPRIA *Life.*

XT SERIES

## EVEN MORE ADVANCED

The new XT version completes the Appria Life machines family, available in 2 and 3 groups in the volumetric version [5 dispensing keys per group].

The performance remains unchanged compared to the 2 and 3 group Appria Life models, but the Appria Life XT has evolved in the form and in the innovative details that improve the final results thanks to the TFT display, pressure sensors, led lights and telemetry.



# TFT DISPLAY FEATURES



## DOSE PROGRAM

It allows programming the dose for each group.



## CLEANING

It allows scheduling the group cleaning and set up the alarm.



## COUNTERS

It's possible to see how many times each group dispensed coffee.



## DISPLAY AND BUTTONS

It's possible to adjust the brightness of the buttons and display.



## SETTINGS

It allows the setting of standard functions and it provides information about the software and connection.



## PRESSURE SENSORS

It allows to read directly from the display the pressure inside the boiler.



# APPRIA *life.*

TIMERSERIES

## FOCUS ON DOSE CONSISTENCY

We called it Timer as its tft display can show the shot time in order operators can check consistency in the cup.

The performance remains unchanged compared to the 2 and 3 group Appria Life models. Appria Life Timer is available in 2 and 3 groups in the volumetric version (5 dispensing keys per group) with a mechanical pressostat.



# APPIA LIFE TIMER DISPLAY FEATURES



## DOSE PROGRAM

It allows programming the dose for each group.



## CLEANING

It allows scheduling the group cleaning and set up the alarm.



## COUNTERS

It's possible to see how many times each group dispensed coffee.



## DISPLAY AND BUTTONS

It's possible to adjust the brightness of the buttons and display.



## SETTINGS

It allows the setting of standard functions and it provides information about the software and connection.



# GREAT COMFORT MEANS HAPPY BARISTAS

*Happy barista means greater productivity.*

Appia Life makes productivity even more efficient thanks to its ergonomic style, improving the service speed and assisting the barista in day-to-day performances.



## REVERSE MIRROR

This feature allows the barista to check the coffee dripping and cleanliness of the filter holder from a much more comfortable position.



## ALIGNED CUP WARMER

The cup warmer is aligned with the top of the machine. Thanks to this feature, the user has an easier reach and speeds up the working process.



## PUSH BUTTON PANEL

The push-button panel has been re-created to be user friendly and more resistant in the long run.



## EASY MAINTENANCE

Appia Life has been designed to be more efficient when it come to maintenance. The complete new style of the machine facilitates the user in any operations routine. Its new adjustable nozzle attachment, new side opening system and redesigned groups, are all features that allow it to be majorly efficient.



# NO ONE HAS EVER GIVEN YOU SO MUCH FOR THE SAME VALUE AS APPIA LIFE

Appia Life is available with 2 groups as "Semi-automatic" and "Volumetric", which has useful functions including the practical "automatic wash".

SEMI-AUTOMATIC

VOLUMETRIC





←  
*redesigned  
and enhanced*

## NEW DESIGN

Even more compact, the Appia Life empowers a stronger connection between machine and barista. The new stylish design allows the coffee machine to be suitable for any arrangement.

With the edition of two chrome bands wrapped around the rear panel, the machine radiates a serene fascination.

# RAISED GROUP ☕ ☺ ☹ ☑



# LOW GROUP ☕



# SINGLE GROUP ☕



# COMPACT ↘ ↙



ALIGNED  
CUP WARMER

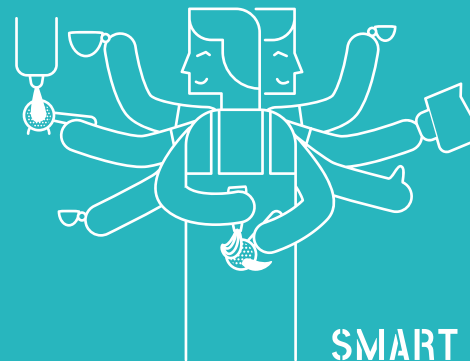
STAINLESS STEEL  
STEAM WAND



ENERGY  
EFFICIENCY



LONG  
LASTING  
MACHINE



SMART

# FUNCTIONAL ASPECTS

Appia Life has all the great features of the previous Appia, only better; push & pull levers, soft-touch portafilter, stainless steel drip tray, adjustable steel nozzles, the wide work surface, the water level indicator, the dual scale pressure gauge and the raised or standard height groups are all re-confirmed features of this incredible machine.

The remote control function is one of the newest features of the Appia Life. It helps the user control and manage the machine from a remote device.



AUTOMATIC  
CLEANING

DIGITAL  
CONTROL

TELEMETRY

PUSH & PULL  
LEVERS

RAISED OR LOW  
GROUP

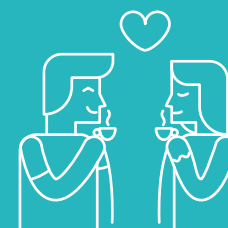
EASY  
CREAM  
SYSTEM

DELICIOUS  
COFFEE

USER  
FRIENDLY

REVERSE  
MIRROR

TOUGH





**XT**SERIES



**TIMER**SERIES



**STANDARD**SERIES



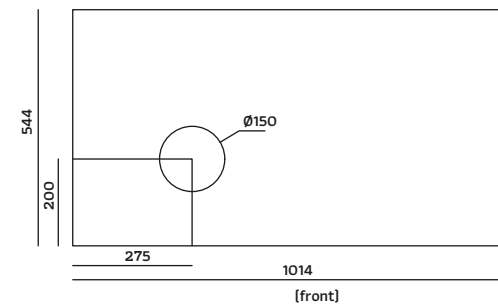
## XT SERIES



VERSION		XT 2 GROUPS	XT 3 GROUPS
MODEL		Volumetric	Volumetric
BODY	MATERIAL	stainless steel with ABS	stainless steel with ABS
BOILER	TOTAL CAPACITY	11 lt	15 lt
	INSULATION	included	included
	PRESSURE SENSORS	included	included
	PID	included	included
GROUP	RAISED GROUPS	optional	optional
	LED LIGHTS	included	included
STEAM	EASYCREAM	optional	optional
	COOL TOUCH STEAM WAND	optional	optional
HOT WATER	N. WAND	1	1
	ECONOMIZER	optional	optional
CUPWARMER	ON/OFF ELECTRIC	optional	optional
RAIL		optional	optional
TELEMETRY		optional	optional
DISPLAY		included	included
DIMENSION	W x D x H mm	784 x 544 x 500	1014 x 544 x 500
WEIGHT	NET/GROS KG	54/66	72/85
POWER	VOLTAGE	220-240 V 50/60 Hz 380-415 V V3N	220-240 V 50/60 Hz 380-415 V V3N
	MAXIMUM POWER	3150 W	5200 W

# TECHNICAL SPECIFICATIONS, COLOURS AND DIMENSIONS

In addition to the “standard” version with side panels and black base, Appia Life is also available in White Pearl and Heart Red, with chrome profiling.



Hole size and distance  
3 GROUPS

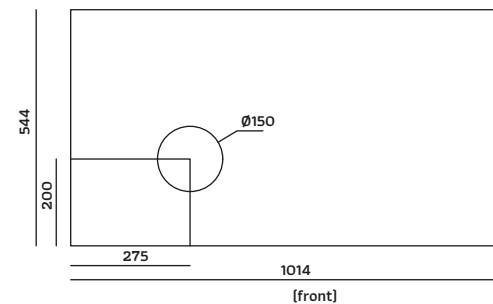
# TIMER SERIES



VERSION		TIMER 2 GROUPS	TIMER 3 GROUPS
<b>MODEL</b>		Volumetric	Volumetric
<b>BODY</b>	MATERIAL	stainless steel with ABS	stainless steel with ABS
<b>BOILER</b>	TOTAL CAPACITY	11 lt	15 lt
	INSULATION	included	included
	PRESSURE SENSORS	not included	not included
	PID	not included	not included
<b>GROUP</b>	RAISED GROUPS	optional	optional
	LED LIGHTS	not included	not included
<b>STEAM</b>	EASYCREAM	optional	optional
	COOL TOUCH STEAM WAND	optional	optional
<b>HOT WATER</b>	N. WAND	1	1
	ECONOMIZER	optional	optional
<b>CUPWARMER</b>	ON/OFF ELECTRIC	optional	optional
<b>RAIL</b>		optional	optional
<b>TELEMETRY</b>		optional	optional
<b>DISPLAY</b>		included	included
<b>DIMENSION</b>	W x D x H mm	784 x 544 x 500	1014 x 544 x 500
<b>WEIGHT</b>	NET/GROS KG	54/66	72/85
<b>POWER</b>	VOLTAGE	220-240 V 50/60 Hz 380-415 V V3N	220-240 V 50/60 Hz 380-415 V V3N
	MAXIMUM POWER	3150 W	5200 W

## TECHNICAL SPECIFICATIONS, COLOURS AND DIMENSIONS

In addition to the “standard” version with side panels and black base, Appia Life is also available in White Pearl and Heart Red, with chrome profiling.



Hole size and distance  
3 GROUPS

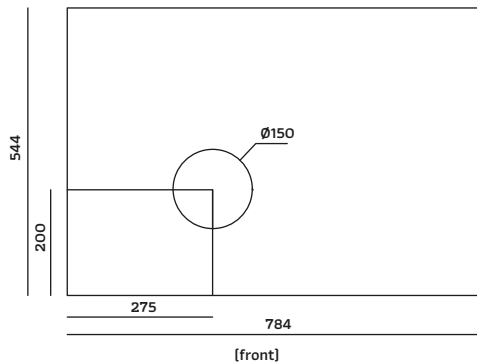
# STANDARD SERIES



## TECHNICAL SPECIFICATIONS, COLOURS AND DIMENSIONS

In addition to the “standard” version with side panels and black base, Appia Life is also available in White Pearl and Heart Red, with chrome profiling.

Hole size and distance  
2 GROUPS



VERSION		2 GROUPS		3 GROUPS		
MODEL		Semi-automatic	Volumetric	Semi-automatic	Volumetric	
BODY	MATERIAL	stainless steel with ABS	stainless steel with ABS	stainless steel with ABS	stainless steel with ABS	
	BOILER	TOTAL CAPACITY	11 lt	11 lt	15 lt	15 lt
		INSULATION	included	included	included	included
	PID	not included	not included	not included	not included	
GROUP	RAISED GROUPS	optional	optional	optional	optional	
STEAM	EASYCREAM		optional		optional	
HOT WATER	N. WAND	1	1	1	1	
	ECONOMIZER	optional	optional	optional	optional	
CUPWARMER	ON/OFF ELECTRIC		optional		optional	
RAIL		optional	optional	optional	optional	
TELEMETRY			optional		optional	
DIMENSION	W x D x H mm	784 x 544 x 500	784 x 544 x 500	1014 x 544 x 500	1014 x 544 x 500	
WEIGHT	NET/GROS KG	54/66	54/66	72/85	72/85	
POWER	VOLTAGE	220-240 V 50/60 Hz 380-415 V V3N	220-240 V 50/60 Hz 380-415 V V3N	220-240 V 50/60 Hz 380-415 V V3N	220-240 V 50/60 Hz 380-415 V V3N	
	MAXIMUM POWER	3150 W	3150 W	5200 W	5200 W	

# S

STANDARD  
SERIES

WHITE PEARL



BLACK



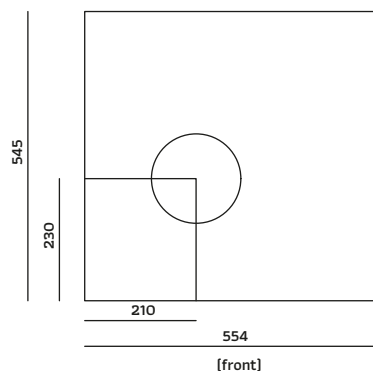
HEART RED



## TECHNICAL SPECIFICATIONS, COLOURS AND DIMENSIONS

In addition to the “standard” version with side panels and black base, Appia Life is also available in White Pearl and Heart Red, with chrome profiling.

Hole size and distance  
COMPACT



VERSION		COMPACT	
MODEL		Semi-automatic	Volumetric
BOILER	MATERIAL	stainless steel with ABS	stainless steel with ABS
	TOTAL CAPACITY	7,5 lt	7,5 lt
	INSULATION	included	included
	PID	not included	not included
GROUP	RAISED GROUPS	optional	optional
STEAM	EASYCREAM		optional
HOT WATER	N. WAND	1	1
	ECONOMIZER	optional	optional
	CUPWARMER	ON/OFF ELECTRIC	optional
TELEMETRY			optional
DIMENSION	W x D x H mm	554 x 545 x 498	554 x 545 x 498
WEIGHT	NET/GROS KG	42,5/52,5	42,5/52,5
	VOLTAGE	220-240 V 50/60 Hz 110-120 V 60 Hz	220-240 V 50/60 Hz 110-120 V 60 Hz
POWER	MAXIMUM POWER	2900 W [230 V] 1400 W [115 V]	2900 W [230 V] 1400 W [115 V]

# S

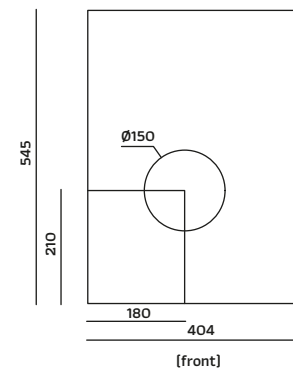
STANDARD  
SERIES



VERSION		1 GROUP	
MODEL		Semi-automatic	Volumetric
<b>BODY</b>	MATERIAL	stainless steel with ABS	stainless steel with ABS
<b>BOILER</b>	TOTAL CAPACITY	5 lt	5 lt
	INSULATION	included	included
	PID	not included	not included
<b>GROUP</b>	RAISED GROUPS	included	included
<b>STEAM</b>	EASYCREAM		optional
<b>HOT WATER</b>	N. WAND	1	1
	ECONOMIZER	optional	optional
<b>CUPWARMER</b>	ON/OFF ELECTRIC	optional	optional
<b>TELEMETRY</b>			optional
<b>DIMENSION</b>	W x D x H mm	404 x 545 x 498	404 x 545 x 498
<b>WEIGHT</b>	NET/GROS KG	32,5/41	32,5/41
<b>POWER</b>	VOLTAGE	220-240 V 50/60 Hz 110-120 V 60 Hz	220-240 V 50/60 Hz 110-120 V 60 Hz
	MAXIMUM POWER	1900 W [230 V] 1400 W [115 V]	1900 W [230 V] 1400 W [115 V]

## TECHNICAL SPECIFICATIONS, COLOURS AND DIMENSIONS

In addition to the “standard” version with side panels and black base, Appia Life is also available in White Pearl and Heart Red, with chrome profiling.



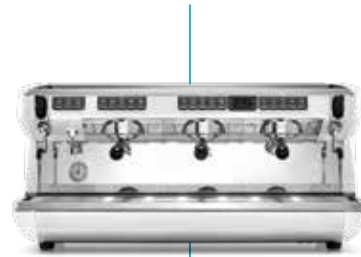
Hole size and distance  
SINGLE GROUP

# COMPARISON SHEET

---

APPIA  
*Life.*

APPIA LIFE XT  
3 GROUPS



VOLUMETRIC

APPIA LIFE XT  
2 GROUPS



VOLUMETRIC

APPIA LIFE TIMER  
3 GROUPS



VOLUMETRIC

APPIA LIFE TIMER  
2 GROUPS

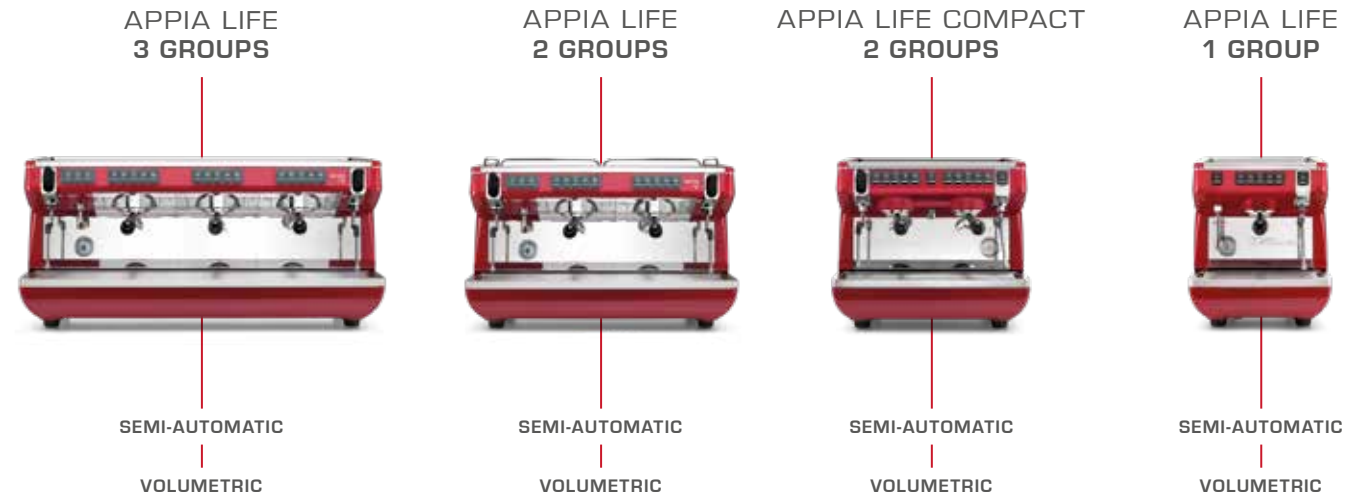


VOLUMETRIC

COMPARISON SHEET

VERSION		XT 3 GROUPS	XT 2 GROUPS	TIMER 3 GROUPS	TIMER 2 GROUPS
MODEL		Volumetric	Volumetric	Volumetric	Volumetric
BODY	MATERIAL	stainless steel with ABS	stainless steel with ABS	stainless steel with ABS	stainless steel with ABS
BOILER	TOTAL CAPACITY	15 lt	11 lt	15 lt	11 lt
	INSULATION	included	included	included	included
	PRESSURE SENSORS	included	included	not included	not included
	PID	included	included	not included	not included
GROUP	RAISED GROUPS	optional	optional	optional	optional
	LED LIGHTS	included	included	not included	not included
STEAM	EASYCREAM	optional	optional	optional	optional
	COOL TOUCH STEAM WAND	optional	optional	optional	optional
HOT WATER	N. WAND	1	1	1	1
	ECONOMIZER	optional	optional	optional	optional
CUPWARMER	ON/OFF ELECTRIC	optional	optional	optional	optional
RAIL		optional	optional	optional	optional
TELEMETRY		optional	optional	optional	optional
DISPLAY		included	included	included	included
DIMENSION	W x D x H mm	1014 x 544 x 500	784 x 544 x 500	1014 x 544 x 500	784 x 544 x 500
WEIGHT	NET/GROS KG	72/85	54/66	72/85	54/66
POWER	VOLTAGE	220-240 V 50/60 Hz 380-415 V V3N	220-240 V 50/60 Hz 380-415 V V3N	220-240 V 50/60 Hz 380-415 V V3N	220-240 V 50/60 Hz 380-415 V V3N
	MAXIMUM POWER	5200 W	3150 W	5200 W	3150 W

# STANDARD SERIES



VERSION		3 GROUPS		2 GROUPS		COMPACT		1 GROUP	
MODEL		Semi-automatic	Volumetric	Semi-automatic	Volumetric	Semi-automatic	Volumetric	Semi-automatic	Volumetric
<b>BODY</b>	MATERIAL	stainless steel with ABS	stainless steel with ABS	stainless steel with ABS	stainless steel with ABS	stainless steel with ABS	stainless steel with ABS	stainless steel with ABS	stainless steel with ABS
	<b>BOILER</b>	TOTAL CAPACITY	15 lt	15 lt	11 lt	11 lt	7,5 lt	7,5 lt	5 lt
	INSULATION	included	included	included	included	included	included	included	included
	PID	not included	not included	not included	not included	not included	not included	not included	not included
<b>GROUP</b>	RAISED GROUPS	optional	optional	optional	optional	optional	optional	included	included
<b>STEAM</b>	EASYCREAM		optional		optional		optional		optional
<b>HOT WATER</b>	N. WAND	1	1	1	1	1	1	1	1
	ECONOMIZER	optional	optional	optional	optional	optional	optional	optional	optional
<b>CUPWARMER</b>	ON/OFF ELECTRIC		optional		optional	optional	optional	optional	optional
<b>RAIL</b>		optional	optional	optional	optional				
<b>TELEMETRY</b>			optional		optional		optional		optional
<b>DIMENSION</b>	W x D x H mm	1014 x 544 x 500	1014 x 544 x 500	784 x 544 x 500	784 x 544 x 500	554 x 545 x 498	554 x 545 x 498	404 x 545 x 498	404 x 545 x 498
<b>WEIGHT</b>	NET/GROS KG	72/85	72/85	54/66	54/66	42,5/52,5	42,5/52,5	32,5/41	32,5/41
<b>POWER</b>	VOLTAGE	220-240 V 50/60 Hz 380-415 V V3N	220-240 V 50/60 Hz 380-415 V V3N	220-240 V 50/60 Hz 380-415 V V3N	220-240 V 50/60 Hz 380-415 V V3N	220-240 V 50/60 Hz 110-120 V 60 Hz	220-240 V 50/60 Hz 110-120 V 60 Hz	220-240 V 50/60 Hz 110-120 V 60 Hz	220-240 V 50/60 Hz 110-120 V 60 Hz
	MAXIMUM POWER	5200 W	5200 W	3150 W	3150 W	2900 W [230 V] 1400 W [115 V]	2900 W [230 V] 1400 W [115 V]	1900 W [230 V] 1400 W [115 V]	1900 W [230 V] 1400 W [115 V]

**APPRIA**  
*Life.*

*Coffee machines for life.*



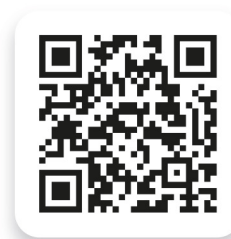




 nuova  
SIMONELLI

**ITALY**

Simonelli Group  
Via E. Betti, 1  
62020 Belforte del Chienti  
Macerata - Italy  
T +39 0733 9501  
F +39 0733 950242  
info@simonelligroup.it  
www.simonelligroup.it



WEBSITE



YOUTUBE